

# Understanding the Advantages of a FM 4882 Approved Wall Panel System

- Tested and certified for use in smoke sensitive occupancies such as pharmaceutical, biotech, and food processing cleanrooms.
- Reduced risk of fire loss, smoke damage and production down time.
- Sprinkler protection may be reduced or eliminated if the occupancy allows.



FM 4882 is a standard developed by FM Global for products used as interior cleanroom wall materials. This standard combines FM 4880 and ASTM E84 standards into one harmonized standard for pharmaceutical, biotech, and food industries. FM 4882 approved panels are low smoke emittance and will not allow self-propagation of a fire; therefore, may not require the use of difficult to clean and maintain interior fire sprinkler systems\*.

In addition to the low-smoke and non-propagation properties needed to receive FM 4882 Approval, TAKIRON GMP Cleanroom Wall Cladding is uniquely manufactured to be mechanically stable and withstand extreme cleaning regimes, as well as, repeated equipment impacts providing assurance the cleanroom walls will not be compromised.

*\*Always check and follow all local building codes and regulations when installing Takiron.*



[www.takiron.com](http://www.takiron.com)



3265 Sunset Lane, Hatboro, PA 19040  
P: 844-899-4GMP

50 Brigham Street, Marlboro, MA 01752  
P: 508-624-5577

[www.spscletech.com](http://www.spscletech.com)



## GMP Cleanroom Wall Cladding

Pharmaceutical *Biotech*  
Medical Device **Food**  
Cosmetics *Applications*



# Industries that require clean, controlled GMP manufacturing space will understand the benefit of the TAKIRON IVY-ONE® GMP Wall Cladding system.

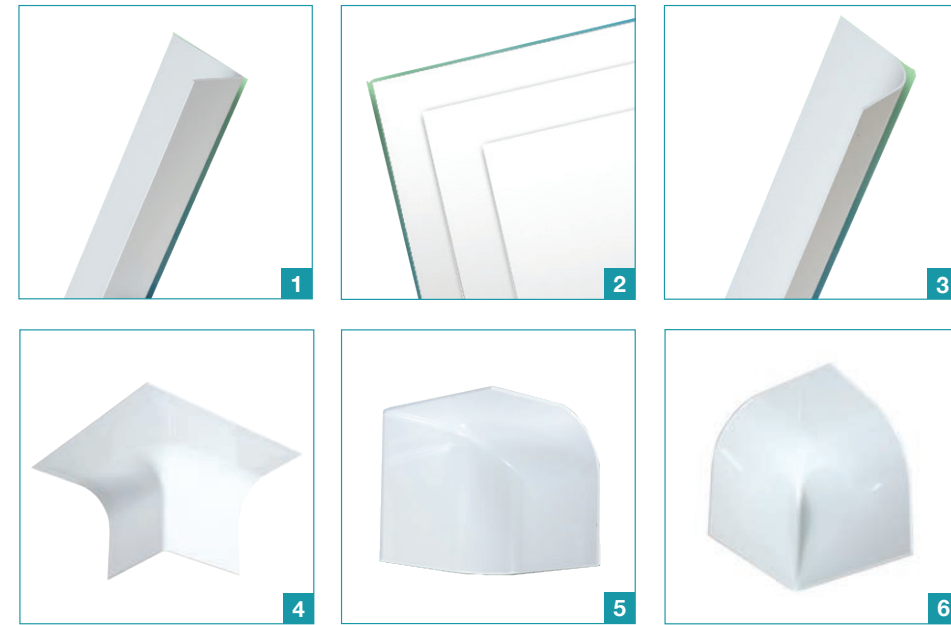
TAKIRON “IVY-ONE” is a pressed laminate CPVC panel, specifically manufactured for interior wall cladding applications in GMP production facilities where flame and smoke resistance, antimicrobial, and durable materials are required. IVY-ONE provides users with the cleanest possible environment due to its high density, non-porous construction, smooth surface finish and natural chemical resistance. It is manufactured to withstand strong sporicidal cleaners as well as harsh chemical cleaning agents. It is even strong enough to handle high pressure washing and direct steam.

With its exclusive smooth surface finish, superior mechanical stability, and puncture resistance, the TAKIRON IVY-ONE® cleanroom wall solution minimizes costly, unplanned shutdowns in GMP environments. When critical production areas cannot afford downtime, but easy cleaning, sterilization, and strict fire and smoke ratings are necessary, TAKIRON IVY-ONE® is the answer.



## Accessories for Pharmaceutical Installations

TAKIRON IVY-ONE® offers pre-formed wall system accessories and trim pieces which help speed up installation and provide the continuous smooth and hygienic surfaces required in the GMP environment.



### IVY ONE PRODUCT ACCESSORIES

1. Pre-Formed 8' Corner – 90 degree straight transition
2. TAKIRON IVY-ONE 573 – 2mm, 4' x 8' CPVC Sheets
3. Pre-Formed 8' Corner – 90 degree curved transition
4. Outside Corner 3-way transition (OUTRL)
5. Inside Curved Corner transition (INRR)
6. Inside Straight Corner transition (INRL)
7. Takitape 47 – Double-sided adhesive tape
8. Welding Rod 6171
9. Takibond 47 – Adhesive



Distributed by SPS CleanTech, LLC

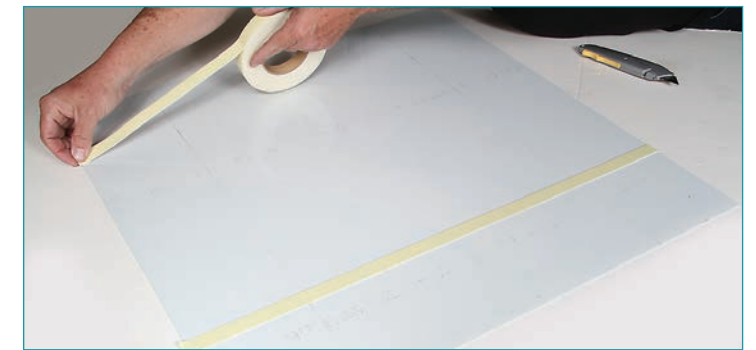
3265 Sunset Lane, Hatboro, PA 19040 • P: 844-899-4GMP  
50 Bringham Street, Marlboro, MA 01752 • P: 508-624-5577

[www.spscletech.com](http://www.spscletech.com)

## TAKIRON GMP Cleanroom Wall Installation

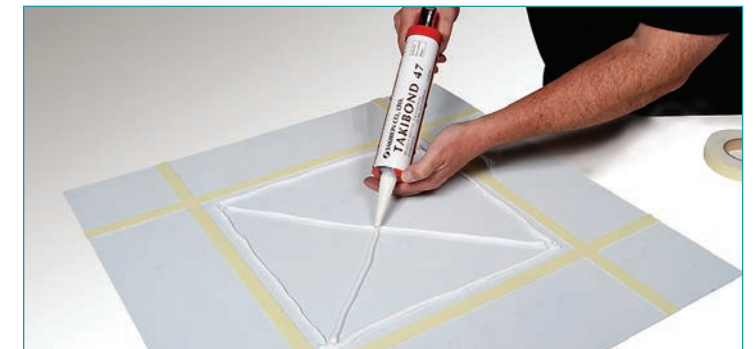
### STEP 1 Positioning Double-Sided Tape

Install TAKIRON's special double-sided Takitape #47 in a grid pattern on the back of the wall panels.



### STEP 2 Applying the Adhesive

Use TAKIRON's Takibond #47 adhesive inside the grid to permanently adhere the panels and accessories.



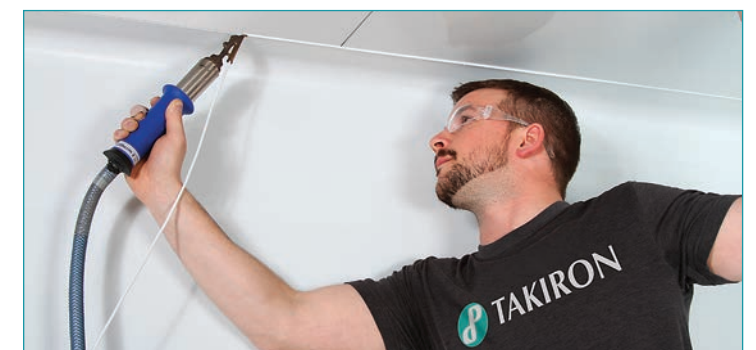
### STEP 3 Fitting the IVY573 Wall Panels

After the wall panels are securely in place, the surface is rolled to eliminate entrapped air and spread Takibond adhesive. The protective covering is then removed prior to welding.



### STEP 4 Welding

To ensure a clean, sealed, and smooth surface, your installers will use an approved hot air welder and welding rod to join panels and accessories.



Additional installation information is available at [www.takiron.com](http://www.takiron.com).

Use of a professionally trained and approved installation contractor is highly recommended.